

# Milton Keynes Insight 2016



[www.mkiobservatory.org.uk](http://www.mkiobservatory.org.uk)

## Contents

Contents .....	1
Milton Keynes Insight 2016 .....	2
1. Housing .....	3
2. Economy .....	4
3. Population and Demography .....	5
4. Health .....	6
5. Education .....	7
6. Adult Social Care .....	8
7. Community Factors .....	9
References .....	10





## MILTON KEYNES INSIGHT 2016

---

**Milton Keynes Insight provides a snapshot of the fundamental statistics of Milton Keynes across various sectors. Providing an indication of changed, it will be useful in establishing benchmarks and providing focus for those who plan strategy and resources. This 'insight' highlights the challenges that face the people of Milton Keynes, local service planners and voluntary agencies.**

Milton Keynes has experienced many changes since its foundation. In 1967, Milton Keynes covered an area of 21,870 acres (8,850 ha), but over the intervening years this area has grown to 76,261 acres (30,862 ha). This means that Milton Keynes is now nearly three and half times as large as it was just 5 decades ago. Changes in size were matched by growth in the local economy, housing, population, as well as education, and health needs.

Milton Keynes Insight, which was formerly called the Milton Keynes Social Atlas, provides a very quick and easy portrait of the available comparable information in 2015-16. A more detailed version of this report will be available to download at a future date from our website [www.mkiobservatory.org.uk](http://www.mkiobservatory.org.uk), where links to the previous Social Atlases are available.

For more information, please contact:

Lina Widyatama  
Research Information Analyst  
Milton Keynes Council  
Civic Offices  
MK9 3EJ

01908 254859

[webmaster@mkiobservatory.org.uk](mailto:webmaster@mkiobservatory.org.uk)

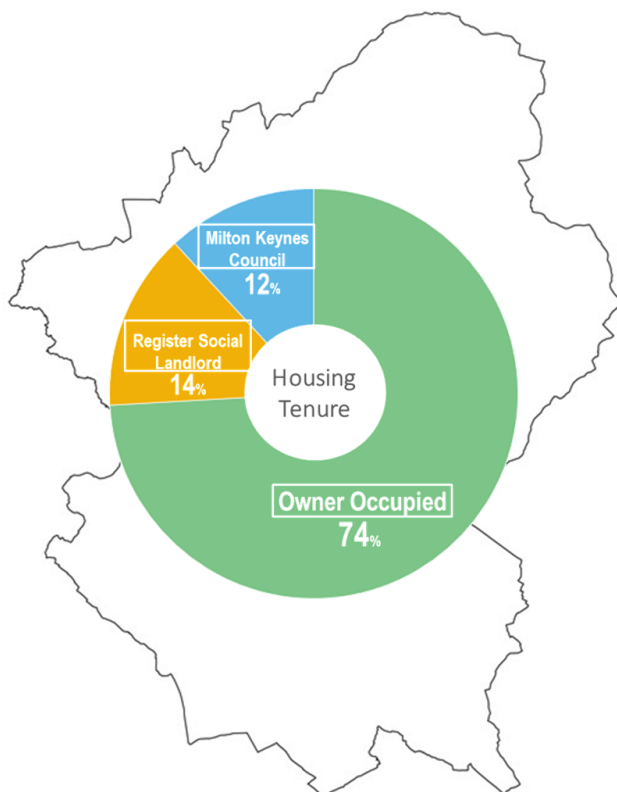
## 1. Housing

Living in satisfactory housing conditions is one of the most important aspects of people's lives. Every year Milton Keynes the number of residential dwellings increases to meet the growth in population.

MK Plan, prepared by the Council's planning team, decides what development is needed and where this will go. Housing targets and forecasts for the next 10 years are already set to accommodate the fast growth of the Borough.

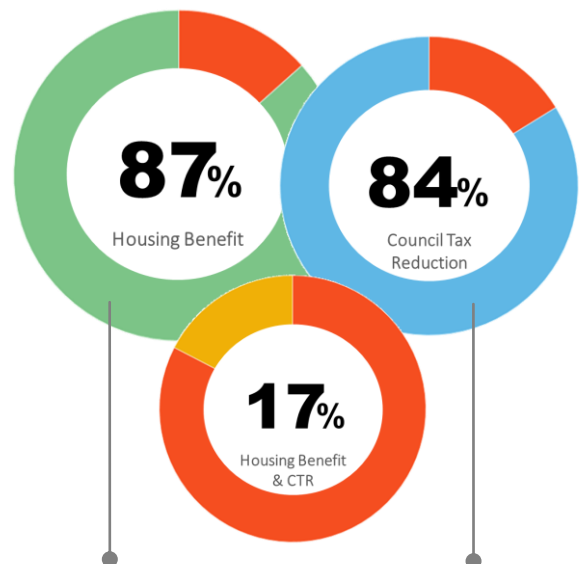
### Milton Keynes Figures

In 2016 there were **109,062** housing stocks in Milton Keynes, up **3%** since 2013.



Tenure describes the legal status of house in which people live, rented or owned. In 2016, **74%** of all housing tenures were owner occupied.

Amongst benefit claimants **87%** claim Housing Benefit, and **84%** claim Council Tax Reduction, but there are only **17%** claimants of both (March 10<sup>th</sup>, 2016).

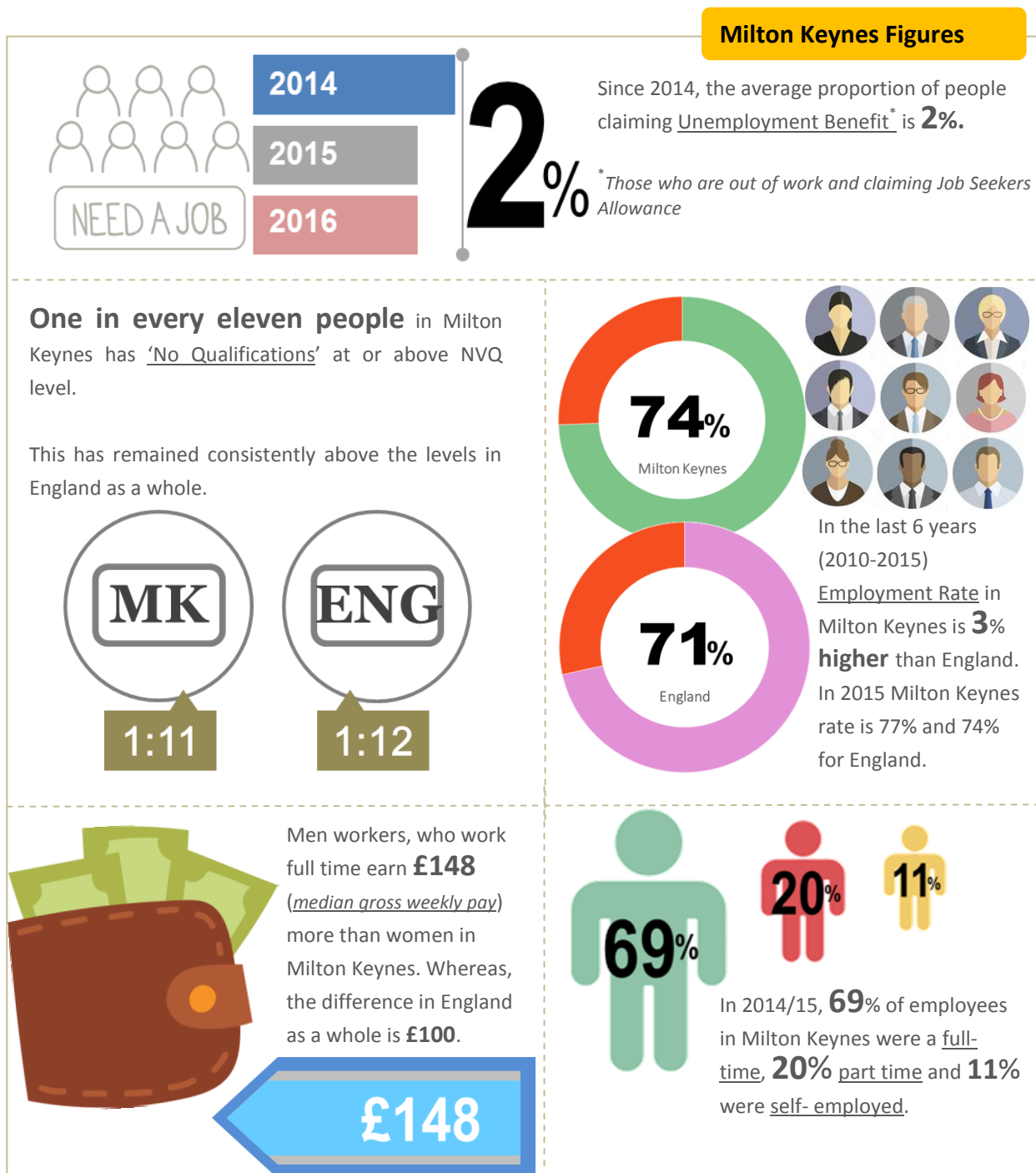


**Water Eaton** has the highest total claimants in Housing Benefit as well as Council Tax Reduction compared to all other estates in the Milton Keynes Borough.

## 2. Economy

The economy of Milton Keynes has relied heavily on the ability of local businesses to grow. This growth has directly influenced the growth of the population in Milton Keynes.

In the last 5 years, Milton Keynes has benefited from high rates of employment with many attractions for both employees and for employers.

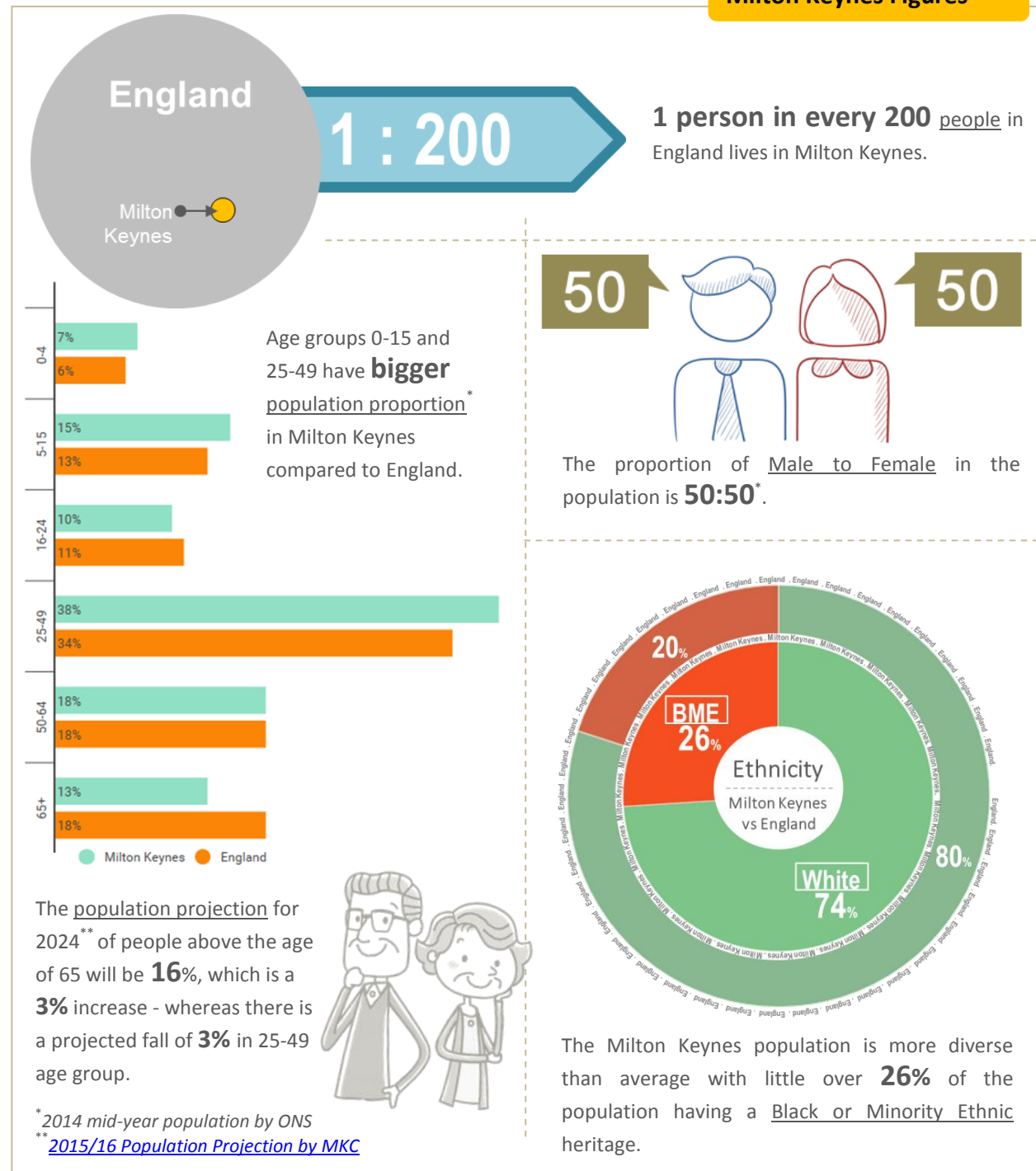


### 3. Population and Demography

Milton Keynes is one of the fastest growing Local Authorities in England. In the last 10 years (2004 and 2014), it grew by 18%.

Milton Keynes is diverse. Between Census 2001 and 2011, the BME (Black & Minority Ethnic) population grew by 69%.

#### Milton Keynes Figures



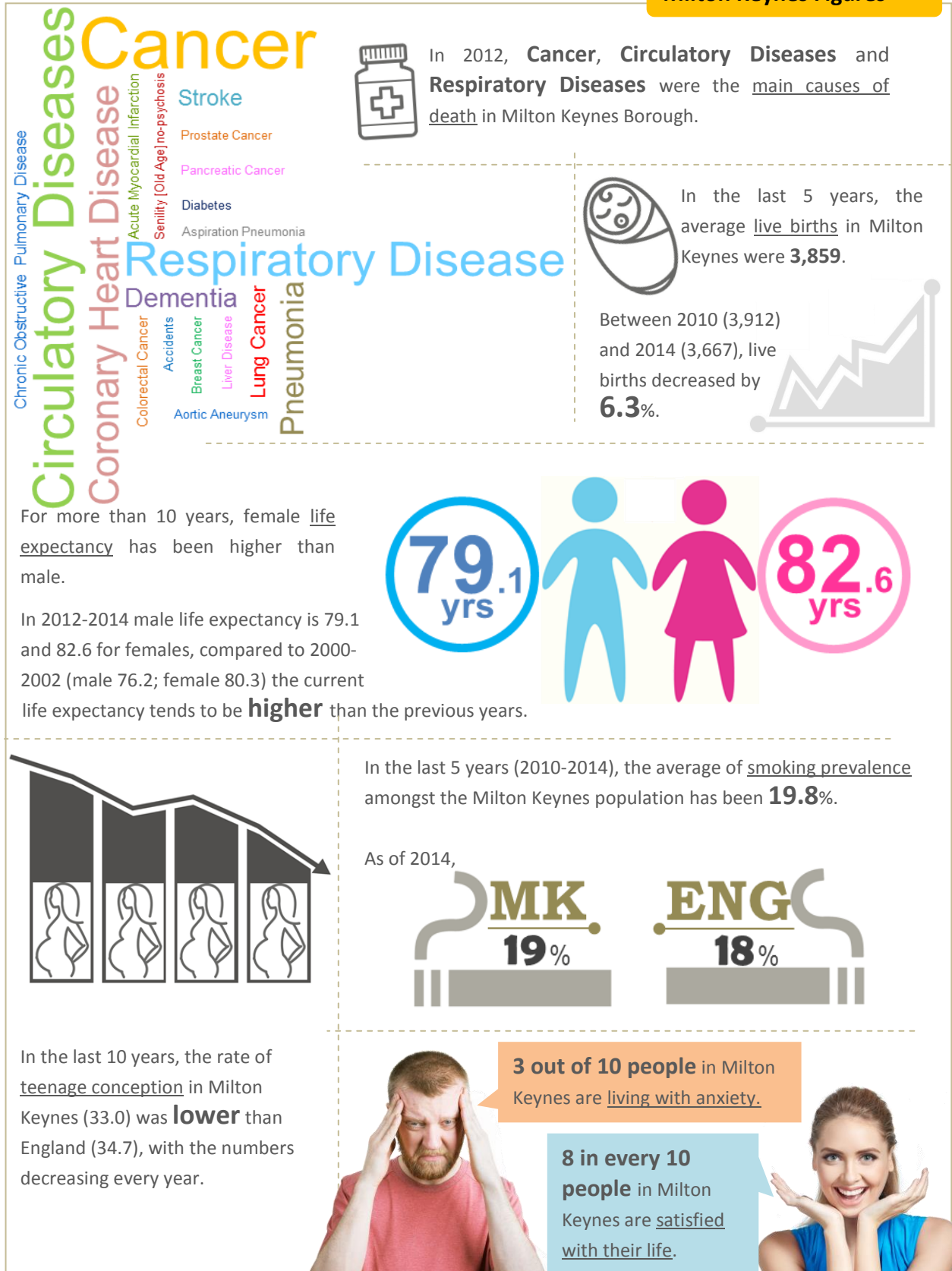


## 4. Health

Health includes the physical, mental, and social wellbeing of the population. A common aim of all services and providers is to help people lead healthier and independent lives

There are 27 General Practices and 1 hospital that care for the Milton Keynes population of more than 250,000.

### Milton Keynes Figures



## 5. Education

Good quality education directly influences people's life chances, with the potential to open incredible doors to opportunity. A good education is difficult to measure, but includes attainment and an appreciation of the challenges some pupils face.

All of the education data below is based on the education census in January 2016. Education in Milton Keynes is in a good condition compared to the national condition.

### Milton Keynes Figures

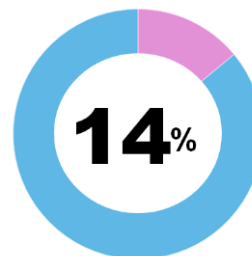


Milton Keynes has **more** Schools judged to be Outstanding/Good by OFSTED\* compared to South East and England (based on the school areas).

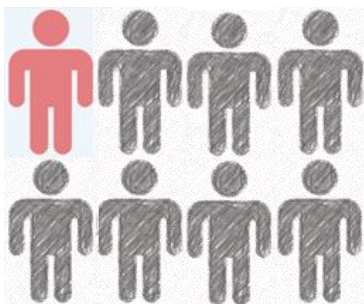
\*OFSTED (Office for Standards in Education, Children's Services and Skills) inspects and regulates services that care for children and young people, and services providing education and skills for learners of all ages.



The pupil ethnicity in Milton Keynes is very **diverse**.



14% of pupils in Milton Keynes have Special Education Needs (SEN).



1 in every 8 pupils in Milton Keynes gets Free School Meals (FSM).



From 2010 until 2015, Milton Keynes has **slightly higher** proportion of SEN pupils (by Statement\*\* only) compared to England.

\*\* Statement: pupils with severe education needs, such as blind, deaf, etc.



Half of total pupils in 2015 in Milton Keynes attained 5+ A\*-C GCSE (including English & Maths), this is **below** the national average (56%).

Water Eaton has the **highest** proportion of FSM pupils compared to the other places in the Borough.



There are 14 settlements in Milton Keynes Borough that have **100%** of pupils who attained 5 or more A\*-C (including English & Maths) in GCSE, these are:



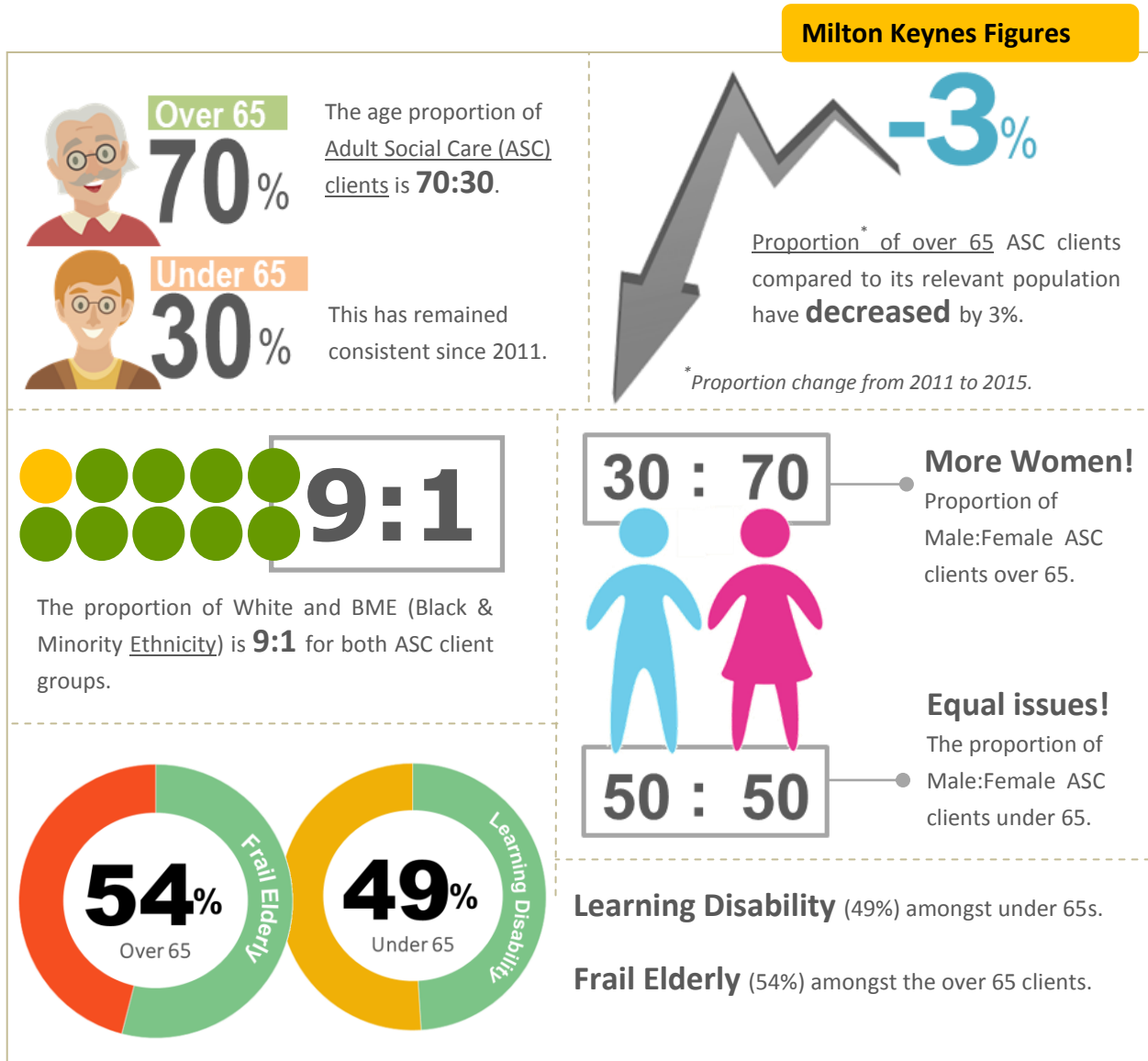
Woolstone, Bancroft,  
Haversham/Little Linford,  
Moulsoe, Stoke Goldington,  
Newton Blossomville,  
Tattenhoe Park, Tyringham & Filgrave,  
Astwood, Blue Bridge,  
Gayhurst, Lathbury, Ravenstone  
and Woughton-on-the-Green.



## 6. Adult Social Care

People with social care needs require support to help them live as independently as possible in their own homes. This includes older people, people with physical disabilities or learning disabilities, and mental health service users.

The number of adults aged 85 or over, the age group most likely to need care, is rising faster than the population as a whole. Local social, economic and demographic factors lead to variation in the level of need, which is unique to Milton Keynes.

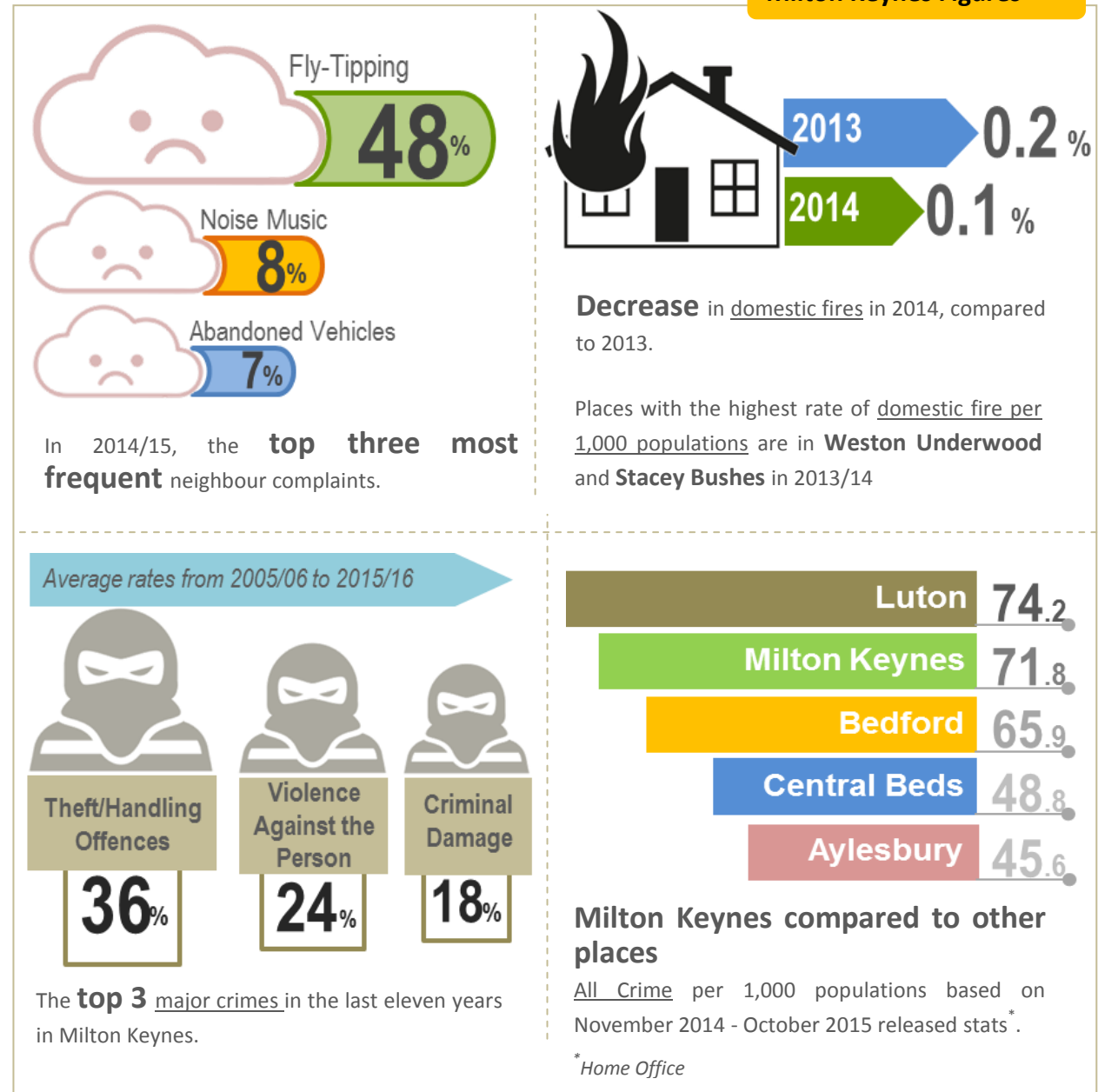


## 7. Community Factors

People's perception of quality of life relies on a number of community factors, which include the environment, crime and safety.

The domestic fire data is from Brominated Flame Retardant (BFRs) and all the crime data below is from Thames Valley Police crime report in 2016. Meanwhile the neighbour complaints data is provided internally from Milton Keynes Council.

### Milton Keynes Figures



# References:

---

## 1. HOUSING

- Housing Stock in 2013-2016 is from Milton Keynes Council-Housing Department.
- Housing Tenure as of date January 2016 is from Milton Keynes Council-Housing Department.
- Housing Benefit and Council Tax Reduction as of date March 2016 is from Milton Keynes Council-Revenue & Benefit Department.

## 2. ECONOMY

- Unemployment Benefit claimants, No Qualification (NVQ), Employment Rate, and Gross weekly pay are from [NOMIS](#).
- Full time Workers data in 2014/15 is from [Local Economic Assessment 2016](#).

## 3. POPULATION AND DEMOGRAPHY

- 2014 Mid-year population is from [ONS](#).
- Milton Keynes Population projection in 2024 is from [MKi Observatory-Population Projections 2015/16](#).
- Ethnicity data is from [MKi Observatory-Census 2011](#).

## 4. HEALTH

- Main Causes of Death in 2012 is from [www.milton-keynes.gov.uk](http://www.milton-keynes.gov.uk).
- Live Births in 2010-2014 and Life Expectancy in 2000-2012 data are from Health and Social Care Information Centre (HSCIC).
- Teenage Conception in 2004-2014 data is from BPAS Database for terminations/SUS Dollis Datawarehouse for births.
- Smoking Prevalence in 2010-2014 data is from [Fingertips - Tobacco Control Profile](#).
- Living under Anxiety and Life Satisfaction data are from [Neighbourhood Statistic](#).

## 5. EDUCATION

- Most of the data in Education (Pupil Ethnicity, SEN, 5+ A\*-C (included English & Maths) in GCSE and FSM) is from Census in January 2016 in Milton Keynes Council-Youth and Community Department.
- OFSTED data is from [OFSTED Report](#).

## 6. ADULT SOCIAL CARE

- All the Adult Social Care data is from Milton Keynes Council-Adult Social Care Department.

## 7. COMMUNITY FACTORS

- Neighbourhood Complaint data in 2014/15 is from Milton Keynes Council-Public Realm Department.
- Domestic Fire data in 2013-2014 is from Brominated Flame Retardant (BFRs).
- Crime data in 2005/06-2015/16 is from Thames Valley Police crime report in 2016.