

# Accidental Domestic Fires Over Time

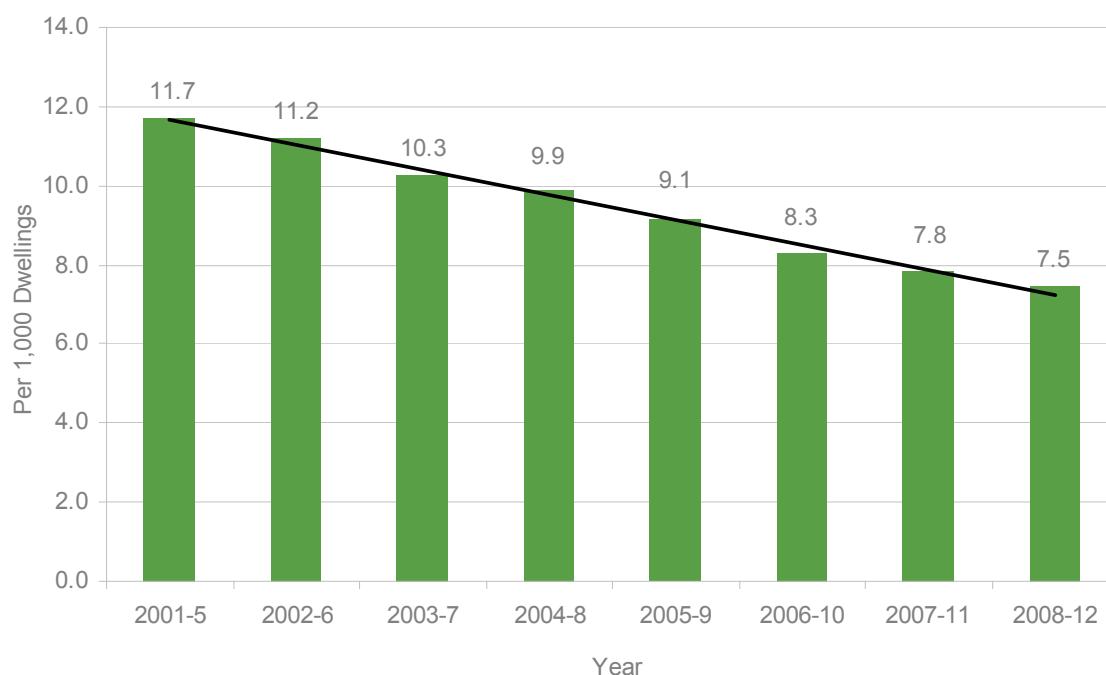
This report analyses accidental domestic fires data provided for the production of the Social Atlas between 2005 and 2016.

## Borough level data over time

The number of accidental domestic fires has decreased by 28% between 2001-5 and 2008-12. In 2001-5 there were 1,038 fires compared with 745 in 2008-12

Looking at the rate per 1,000 dwellings (to adjust for the growth in numbers because of the population growth) the trend in accidental domestic fires is downwards. Between 2001-5 and 2008-12 the rate has steadily decreased from 11.7 offences per 1,000 dwellings to 7.5 per 1,000.

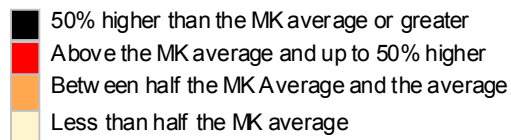
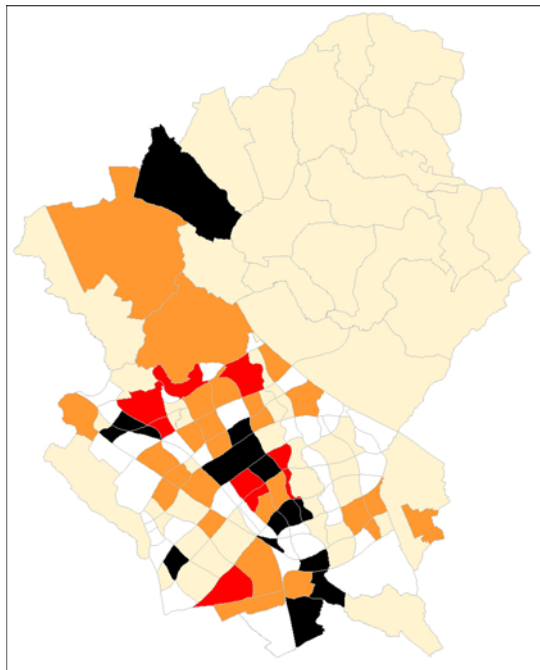
Chart 1: Rate of accidental domestic fires over time, Milton Keynes borough average per 1,000 dwellings



## Estate and Settlement level over time

The pattern of accidental domestic fires is not uniform across the borough. Some estates have significantly above average proportions of fires. Maps 1 and 2 show the rates per 1,000 dwellings for estates in 2001-5 and 2008-12.

Map 1: Rate of accidental dwelling fires 2001-5



Map 2: Rate of accidental dwelling fires 2008-12

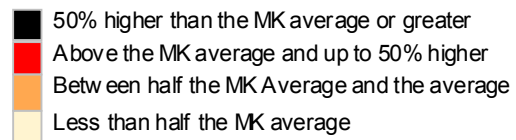
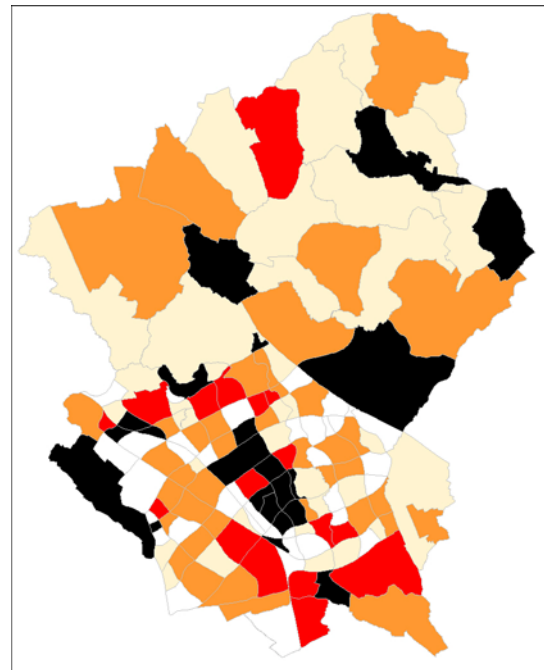


Table 1 shows the top ten estates between 2001-5 and 2008-12. It outlines that Granby was ranked highest between 2001-5 and 2004-8. Netherfield and Fishermead rank highly in all years.

Table 1: Rank of estates for accidental dwelling fires 2001-5-2008-12<sup>i</sup>

	2001-5	2002-6	2003-7	2004-8	2005-9	2006-10	2007-11	2008-12
1	Granby	Granby	Granby	Granby	Central Milton Keynes	Central Milton Keynes	Fishermead	Oakhill
2	Netherfield	Netherfield	Netherfield	Netherfield	Granby	Fishermead	Pear tree Bridge	Fishermead
3	Fishermead	Fishermead	Fishermead	Fishermead	Netherfield	Netherfield	Oakhill	Granby
4	Conniburrow	Central Milton Keynes	Fullers Slade	Central Milton Keynes	Fishermead	Eaglestone	Central Milton Keynes	Conniburrow
5	Fullers Slade	Conniburrow	Central Milton Keynes	Pear tree Bridge	Conniburrow	Conniburrow	Eaglestone	Pear tree Bridge
6	Westcroft	Fullers Slade	Beanhill	Westcroft	Eaglestone	Greenleys	Greenleys	Fullers Slade
7	Central Milton Keynes	Beanhill	Conniburrow	Conniburrow	Pear tree Bridge	Pear tree Bridge	Conniburrow	Netherfield
8	Beanhill	Greenleys	Pear tree Bridge	Hodge Lea	Hodge Lea	Beanhill	Netherfield	Greenleys
9	Stoke Goldington	Water Eaton	Water Eaton	Fullers Slade	Greenleys	Fenny Stratford	Beanhill	Eaglestone
10	Fenny Stratford	Westcroft	Stoke Goldington	Beanhill	Beanhill	Hodge Lea	Hodge Lea	Leadenhall

Table 2 shows the total number of fires for the top ten estates in 2008-12.

Table 2: Accidental dwelling fires in the top ten estates 2008-12<sup>i</sup>

<b>Name</b>	<b>Numbers</b>	<b>Rate</b>
Oakhill	6	24.3
Fishermead	39	23.3
Granby	5	21.9
Conniburrow	23	17.4
Peartree Bridge	7	16.7
Fullers Slade	10	16.5
Netherfield	20	16.3
Greenleys	13	15.3
Eaglestone	15	14.2
Leadenhall	6	14.1
<b>Milton Keynes</b>	<b>745</b>	<b>7.5</b>

---

<sup>i</sup> Excludes estates with a very small number of dwellings.