

Older People's Services Clients Over Time

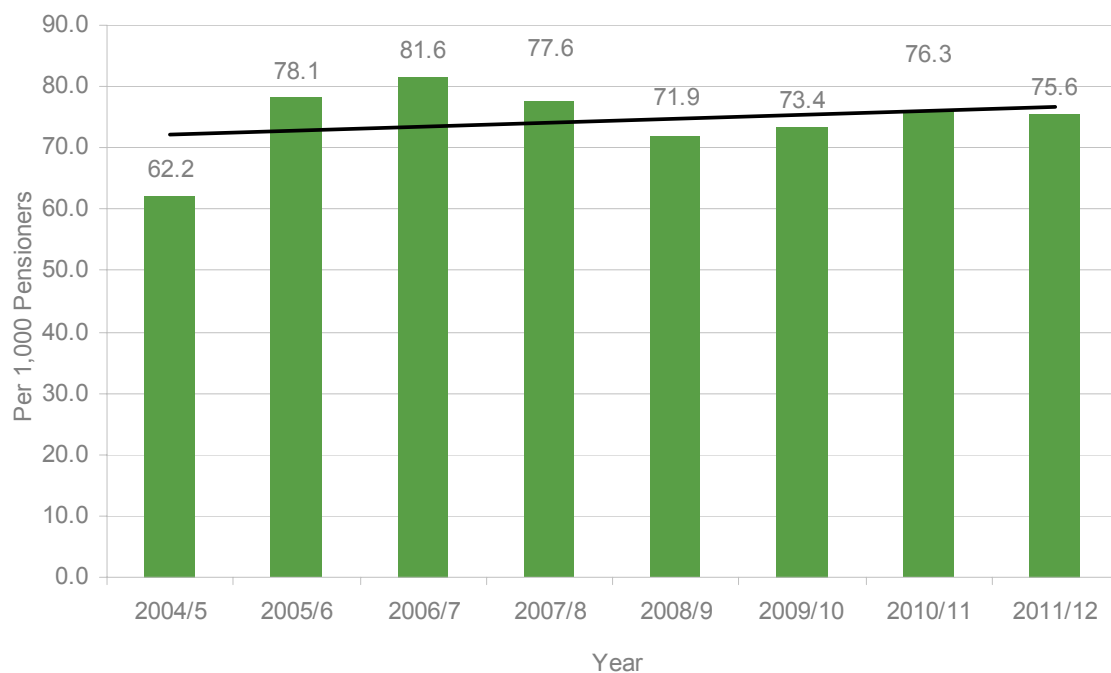
This report analyses the number of clients of older people's services at Milton Keynes Council provided for the production of the Social Atlas between 2005 and 2012.

Borough level data over time

There were 2,168 clients of older people's services in 2011/12. This is a slight increase from the 2010/11 figures of 2,098 and the 2004/5 figure of 1,859.

Looking at the rate per 1,000 pensioners (to adjust for the growth in numbers because of the population growth) the trend between 2006/7 and 2011/12 is relatively flat. 2004/5 had a low rate but since then the rate has fluctuated year on year but with no clear trend. In 2005/6 there was a rate of 78.1 per 1,000 pensioner population compared to 75.6 in 2011/12.

Chart 1: Rate of older people's services clients over time, Milton Keynes borough average per 1,000 pensioners



Estate and Settlement level over time

The pattern of older people's services clients is not uniform across the borough. Some estates have significantly above average proportions of clients. Maps 1 and 2 show the rates per 1,000 pensioners for estates in 2004/5 and 2011/12.

Map 1: Older people's services clients 2004/5

Map 2: Older people's services clients 2011/12

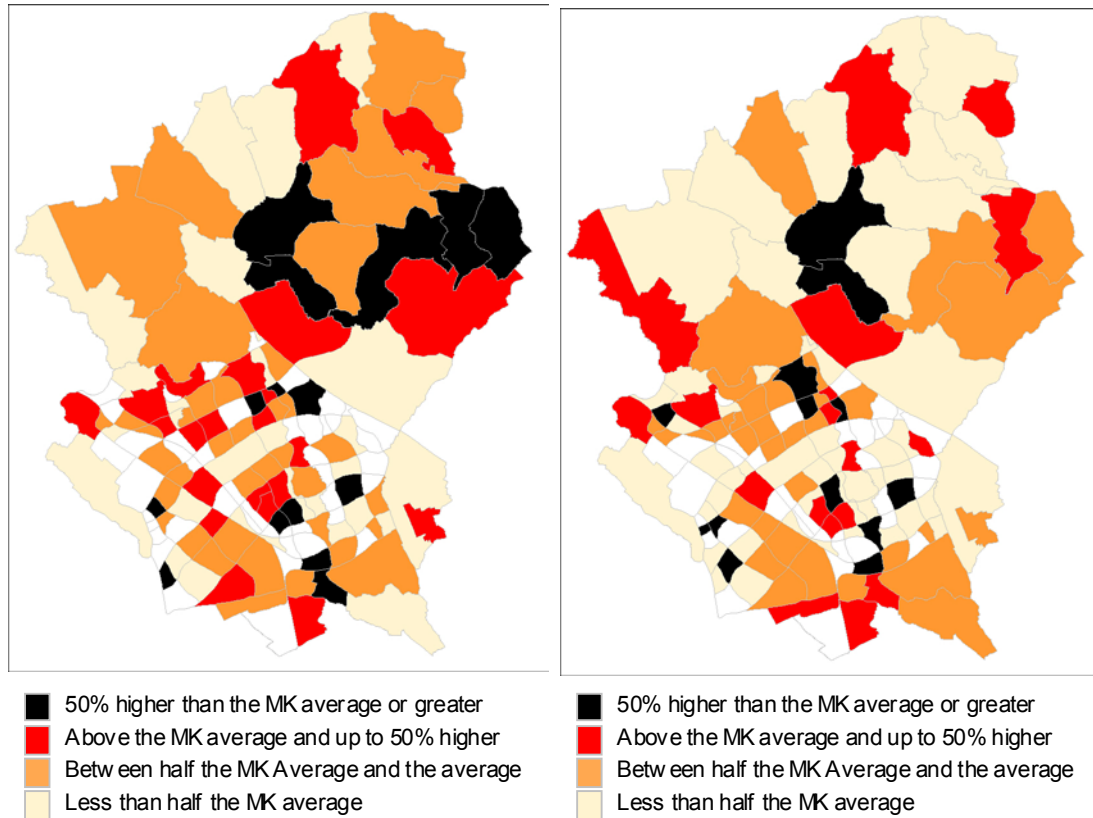


Table 1 shows the top ten estates between 2004/5 and 2011/12. It outlines that Westcroft was ranked in the top two positions in seven of the years. Willen Park also ranks highly in the last five years; this may be because it contains a retirement village, which was opened in 2007.

Table 1: Rank of estates for older people's services clients 2004/5-2011/12ⁱ

	2005	2006	2007	2008	2009	2010	2011	2012
1	Kingsmead	Westcroft	Westcroft	Willen Park	Westcroft	Westcroft	Westcroft	Westcroft
2	Lathbury	Great Linford	Lathbury	Westcroft	Calverton	Neath Hill	Willen Park	Medbourne
3	Tyringham & Filgrave	Lathbury	Great Linford	Neath Hill	Lathbury	Great Linford	Eaglestone	Neath Hill
4	Neath Hill	Netherfield	Netherfield	Great Linford	Great Linford	Lathbury	Dow nhead Park	Great Linford
5	Denbigh East	Denbigh East	Denbigh East	Denbigh East	Denbigh East	Willen Park	Conniburrow	Simpson
6	Netherfield	Neath Hill	Neath Hill	Lathbury	Neath Hill	Denbigh East	Coffee Hall	Lathbury
7	Willen	Kents Hill	Bolbeck Park	Netherfield	Willen Park	Simpson	Fenny Stratford	Denbigh East
8	Kents Hill	Tyringham & Filgrave	Beanhill	Beanhill	Simpson	Eaglestone	Bolbeck Park	Willen Park
9	Fenny Stratford	Beanhill	Kents Hill	Simpson	Netherfield	Netherfield	Great Linford	Eaglestone
10	Bolbeck Park	Loughton	Woolstone	Fenny Stratford	Fenny Stratford	Kents Hill	Wolverton	Kents Hill

The table below shows the total number of clients for the top ten estates in 2011/12.

Table 2: Older People's Services clients in the top ten estates 2011/12ⁱ

Name	Numbers	Rate
Westcroft	32	324.3
Medbourne	8	258.0
Neath Hill	72	255.4
Great Linford	184	252.3
Simpson	34	209.2
Lathbury	7	191.0
Denbigh East	21	173.2
Willen Park	65	172.1
Eaglestone	52	148.8
Kents Hill	37	145.8
Milton Keynes	2168	75.6

ⁱ Excludes estates with a very small population.

Revised population estimates mean that rates in this publication may not match rates published elsewhere.