

Special Educational Needs Pupils Over Time

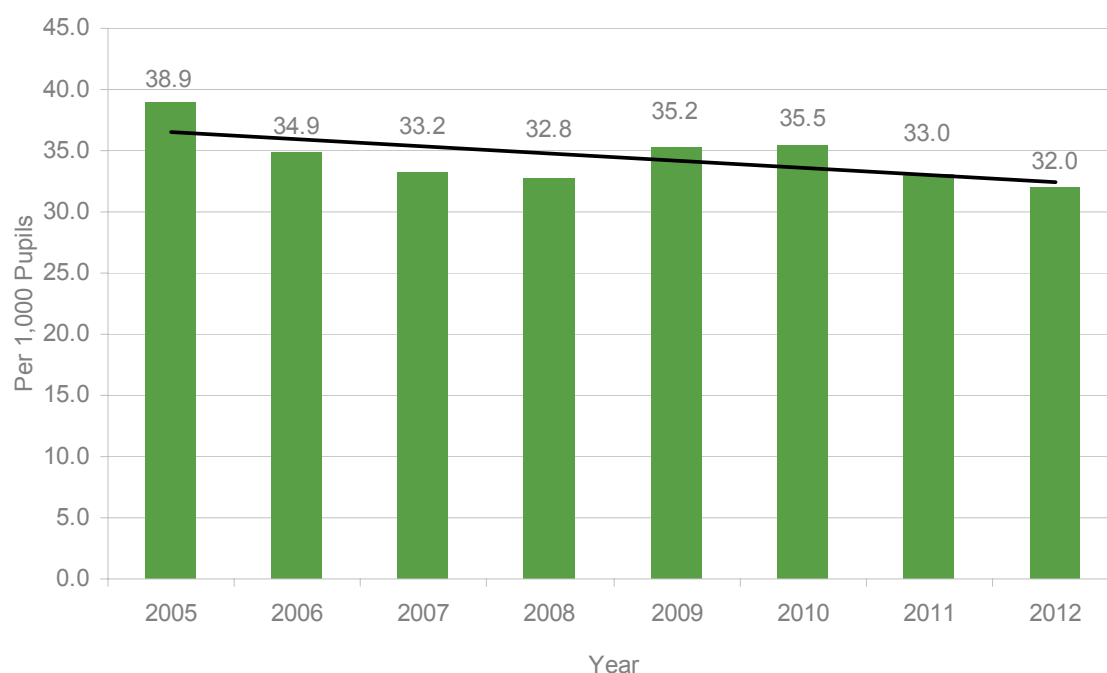
This report analyses special educational needs (SEN) pupil data provided for the production of the Social Atlas between 2005 and 2012.

Borough level data over time

In 2012 there were 1,300 SEN pupils in Milton Keynes. This compares to 1,219 in 2005.

Looking at the rate per 1,000 pupils (to adjust for the growth in numbers because of the population growth) the trend between 2006 and 2012 is relatively flat. 2005 had a high rate of SEN pupils but since then the rate has remained stable. In 2006 there was a rate of 34.9 per 1,000 pupils compared to 32.0 in 2012.

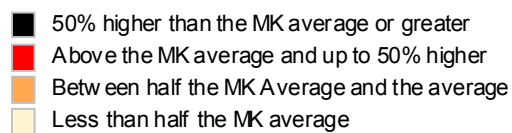
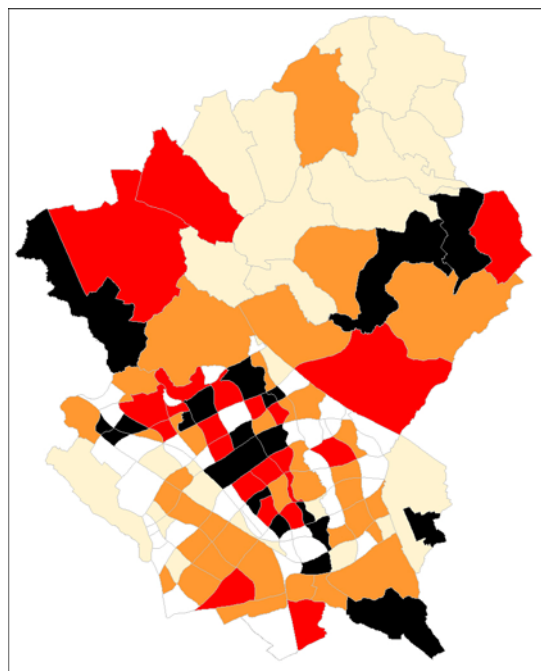
Chart 1: Rate of special educational needs pupils over time, Milton Keynes borough average per 1,000 pupils



Estate and Settlement level over time

The pattern of SEN pupils is not uniform across the borough. Some estates have significantly above average proportions of SEN pupils. Maps 1 and 2 show the rates per 1,000 pupils for estates in 2005 and 2012. They outline that Central Milton Keynes, Beanhill, Tinkers Bridge, Conniburrow, Bradville, Fullers Slade and Bancroft all show up in the highest category in both years.

Map 1: Rate of special educational needs 2005



Map 2: Rate of special educational needs 2012

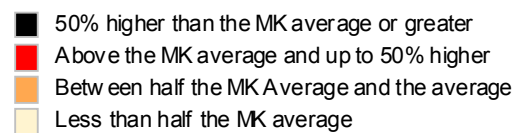
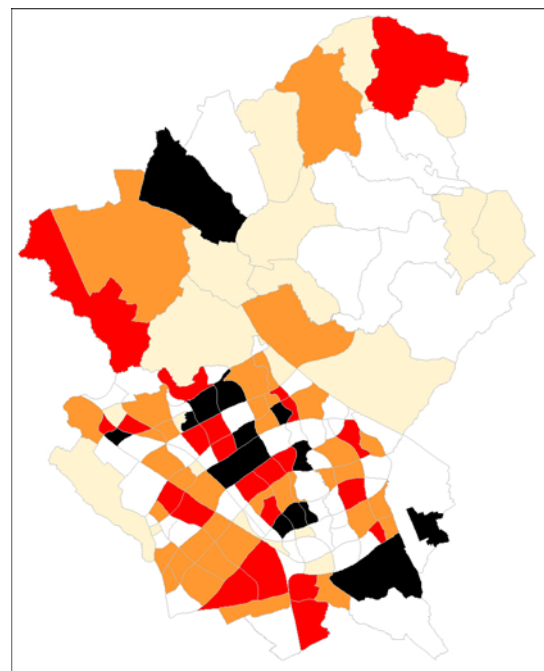


Table 1 shows the top ten estates between 2005 and 2012. It outlines that Central Milton Keynes has had the highest rate for the last seven years. Beanhill has also ranked highly in the last six years.

Table 1: Rank of estates for SEN pupils 2005-2012ⁱ

	2005	2006	2007	2008	2009	2010	2011	2012
1	Woburn Sands	Central Milton Keynes	Central Milton Keynes	Central Milton Keynes	Central Milton Keynes	Central Milton Keynes	Central Milton Keynes	Central Milton Keynes
2	Bolbeck Park	Bolbeck Park	Bolbeck Park	Stoke Goldington	Beanhill	Beanhill	Beanhill	Bow Brickhill
3	Central Milton Keynes	Woburn Sands	Stoke Goldington	Beanhill	Woburn Sands	Tinkers Bridge	Bow Brickhill	Woburn Sands
4	Galley Hill	Stoke Goldington	Beanhill	Greenleys	Tinkers Bridge	Woburn Sands	Woburn Sands	Beanhill
5	Greenleys	Castlethorpe	Woburn Sands	Tinkers Bridge	Conniburrow	Netherfield	Tinkers Bridge	Stoke Goldington
6	Tinkers Bridge	Galley Hill	Oldbrook	Oldbrook	Castlethorpe	Coffee Hall	Conniburrow	Tinkers Bridge
7	Beanhill	Tinkers Bridge	Tinkers Bridge	Bolbeck Park	Greenleys	Oldbrook	Netherfield	Dow nhead Park
8	Pennyland	Pennyland	Woolstone	Dow nhead Park	Dow nhead Park	Stantonbury	Oldbrook	Conniburrow
9	Fullers Slade	Greenleys	Willen Park	Willen	Stantonbury	Conniburrow	Stantonbury	Netherfield
10	Castlethorpe	Beanhill	Bancroft	Fullers Slade	Netherfield	Dow nhead Park	Greenleys	Stantonbury

Table 2 shows the total number of SEN pupils for the top ten estates in 2012. It shows that Central Milton Keynes has a significantly higher rate than the rest of the estates in Milton Keynes.

Table 2: Special Educational Needs Pupils in the top ten estates 2012ⁱ

Name	Numbers	Rate
Central Milton Keynes	20	146.0
Bow Brickhill	5	87.7
Woburn Sands	5	80.6
Beanhill	24	67.2
Stoke Goldington	4	65.6
Tinkers Bridge	11	63.2
Downhead Park	11	53.7
Conniburrow	34	53.4
Netherfield	42	51.3
Stantonbury	33	50.7
Milton Keynes	1,300	32.0

ⁱ Excludes estates with a very small number of pupils.