

# Violent Against Person Offences Over Time

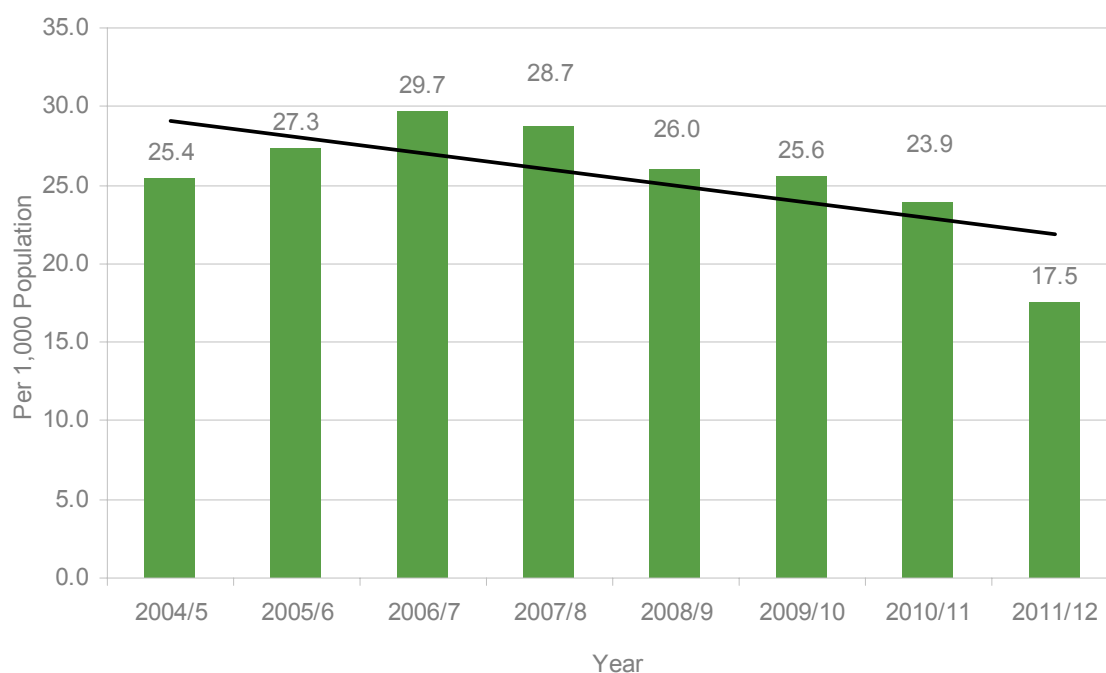
This report analyses violence against person offences data provided for the production of the Social Atlas between 2004/5 and 2011/12.

## Borough level data over time

The number of violence against person offences in Milton Keynes decreased from 5,503 in 2004/5 to 4,308 in 2011/12. This is a decrease of 21.7%.

Looking at the rate per 1,000 population (to adjust for the growth in numbers because of the population growth) the trend in violence against person offences is downwards. Between 2004/5 and 2006/7 there was a growth in the rate of violence against person offences from 25.4 to 29.7 per 1,000 population. Since 2006/7 the rate has decreased including a large decrease between 2010/11 and 2011/12. In 2011/12 the rate was 17.5 per 1,000 population.

Chart 1: Rate of violence against person offences over time, Milton Keynes borough average per 1,000 population



## Estate and Settlement level over time

The pattern of violence against person offences is not uniform across the borough. Some estates have significantly above average proportions of crimes. Maps 1 and 2 show the rates per 1,000 population for estates in 2004/5 and 2011/12.

Map 1: Rate of violence against person offences 2004/5

Map 2: Rate of violence against person offences 2011/12

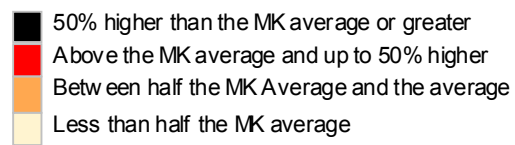
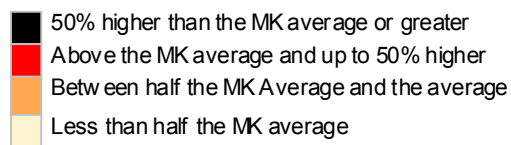
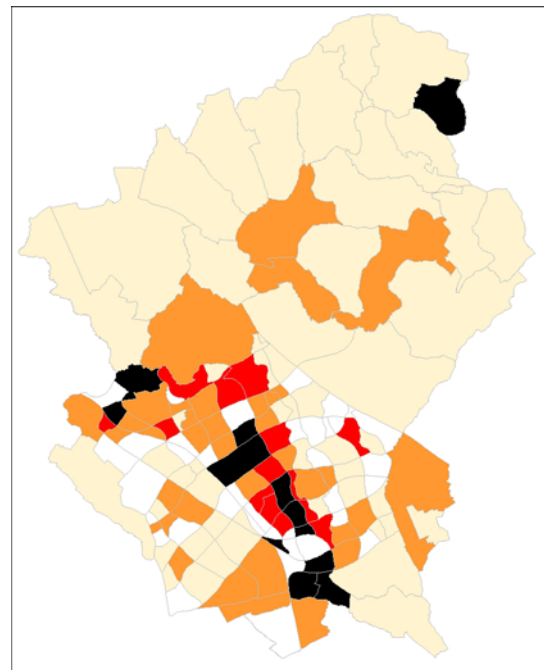
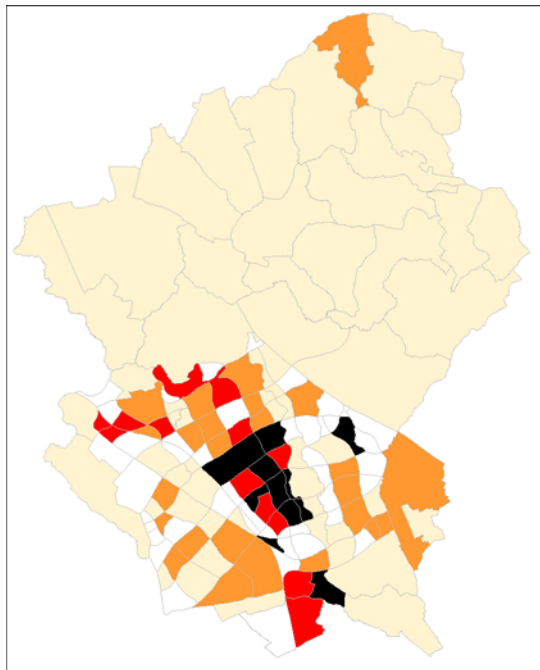


Table 1 shows the top ten estates between 2004/5 and 2011/12. It outlines that Central Milton Keynes is ranked number one in all eight years. Other estates that rank highly in most years are Fenny Stratford and Netherfield.

Table 1: Rank of estates for violence against person offences 2004/5-2011/12<sup>1</sup>

	2005	2006	2007	2008	2009	2010	2011	2012
1	Central Milton Keynes	Central Milton Keynes	Central Milton Keynes	Central Milton Keynes	Central Milton Keynes	Central Milton Keynes	Central Milton Keynes	Central Milton Keynes
2	Leadenhall	Leadenhall	Oakhill	Oakhill	Leadenhall	Leadenhall	Denbigh East	Granby
3	Granby	Eaglestone	Fenny Stratford	Granby	Fenny Stratford	Oakhill	Campbell Park	Wolverton Mill East & South
4	Campbell Park	Fenny Stratford	Leadenhall	Fenny Stratford	Oakhill	Fenny Stratford	Eaglestone	Denbigh East
5	Eaglestone	Tinkers Bridge	Granby	Leadenhall	Eaglestone	Eaglestone	Ashland	Ashland
6	Tinkers Bridge	Netherfield	Eaglestone	Eaglestone	New Bradwell	Netherfield	Fenny Stratford	Fenny Stratford
7	Netherfield	Fishermead	Netherfield	Netherfield	Netherfield	Conniburrow	Old Wolverton	Eaglestone
8	Fenny Stratford	Broughton & Atterbury	Campbell Park	Beanhill	Pear tree Bridge	Tinkers Bridge	Netherfield	Netherfield
9	Fishermead	Granby	Tinkers Bridge	Broughton & Atterbury	Coffee Hall	Campbell Park	Central Bletchley	Old Wolverton
10	Pear tree Bridge	Westcroft	Pear tree Bridge	New Bradwell	Fishermead	Central Bletchley	Granby	Conniburrow

Table 2 shows the total number of violence against person offences for the top ten estates in 2011/12. It outlines that Central Milton Keynes has by far the greatest number of offences. It accounts for 19% of all violence against person offences in Milton Keynes. Central Milton Keynes has the greatest rate of violence against person offences because it is the central commercial district with shops, pubs and entertainment facilities. Therefore it has a relatively low resident population but a high number of visitors.

Table 2: Violence against person offences in the top ten estates 2011/12<sup>i</sup>

Name	Numbers	Rate
Central Milton Keynes	815	387.6
Granby	16	54.3
Wolverton Mill East & South	16	46.6
Denbigh East	16	46.5
Ashland	15	44.8
Fenny Stratford	60	37.4
Eaglestone	82	33.3
Netherfield	113	33.0
Old Wolverton	11	29.6
Conniburrow	114	28.8
<b>Milton Keynes</b>	<b>4,308</b>	<b>17.5</b>

<sup>i</sup> Excludes estates with a very small population.

Revised population estimates mean that rates in this publication may not match rates published elsewhere.